

Allington Castle Archers

Nocking Point

November 2010



Dates for your diary –Indoor shooting 5th, 19th, 26th November

BA Portsmouth :- 5th November

Frostbite :- 7th November

Worcester/Portsmouth Lockmeadow 28th November ALL HANDS NEEDED

CHAIRMAN'S CHAT

Well the indoor season is truly underway and the first Friday night shoot at the Market hall was last Friday. There is so much more space than at the TA hall, you also don't get cooked by the radiators! Some members even had a spot of dinner (KFC) whilst watching the shooting, all very civilized. Alf set a personal best score on the evening and I don't think any arrows were broken? The only thing that took the edge of the evening for me was my bottom limb breaking!!! I was tempted to tape it up and shoot the last 6 arrows just to get a score but didn't want to spoil a good night with bloodshed. So my score for the night will have to be an estimated 465 (I don't think Warwick will accept it)

Don't forget the BA Portsmouths and Frostbites start in Nov and run each month up to and including March so make sure you've got good site marks before they start. Hopefully we can have a successful season and make up for the loss of our old indoor shooting venue at the end of last year.

Finally, It probably appears somewhere else in this issue, but don't forget the AGM on the 16th of Nov. It would be good if as many members as possible could make it to show their support for the Club.

Good Shooting

Neil

Secretary's Sidelines

Some very important matters this month, so please read carefully!!!

First – You should all have received your AFFILIATION CARD, sent to each person individually. If not, contact me.

Next – A new members list is in print and will be given out on the field or sent to you by post in due course.

You should also have received a Nomination form notifying you of the A.G.M. and explaining what you need to do. Most of the present Committee are willing to stand again but any other senior member can stand for election if the right procedure is carried out. Juniors, Social and Associate members

can attend and voice their opinions but they cannot vote.

New members – Hazel Wilson has now joined and seems to be enjoying her archery.

I have been very busy during the last few Saturday mornings coaching the new members, and others, so you may not have received as much help as you hoped. Do please keep asking and I will do my best to help as soon as possible. If you feel that the Club is not giving enough help and encouragement during the early stages of your archery learning curve, then please express your feelings by:-

- 1 Writing an article and sending it to Geoff Barker to put in the Newsletter.
- 2 Come to the A.G.M. and make a contribution under 'Any Other Business'.
- 3 Talk to a Committee member or one of the coaches.

Another silly answer. If you change the distance at which you are shooting you must alter your sight. The further away the target the more you move the sight DOWN. If you cannot move it down because it will touch the arrow then move the whole sight arm in towards the bow. Now the arrows may hit the target. If not ASK FOR HELP.

See you on the field. Colin

Vice Chair

Well the start of the indoors shooting started last week, with quite a good number of archers participating. I used the opportunity to set my bow up with the help of Warwick.

This month is the Worcester/Portsmouth which will be held on Sunday 28th November, Can I please ask that if anyone has any unwanted item/presents they would be kind enough to donate them for raffle prizes, Also the shoot will be held at Maidstone Market Hall, Barker Road, Maidstone. All help would be greatly appreciated.

Sandra

Twig & Stick

What a start to the month, weather wise I mean. I hope you got those sight marks for the indoor or Field.

The winter season has started with a bang or a duuuump, in the gold for me. With a field shoot at the Essex and open in Galleywood a FITA 24 Marked Arrowhead round. Andy Rout joined me (Chris Punton & Sam Barber were coming too but did not make it)

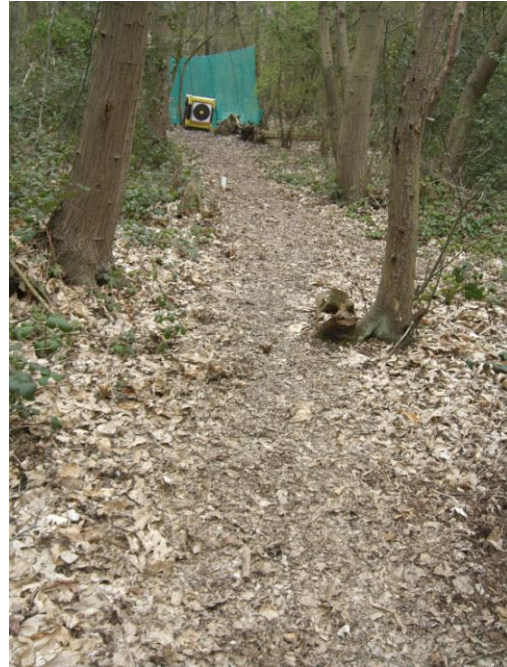
The forecast was awful, wind and heavy rain, but did not arrive till 1:00 and by that time we were only three targets from the end.

I started with the perfect shoot at a 5M Bunny first arrow a 6, plumb in the centre. The other two on that target were a 4 and 3, so with a score of 13 from a max of 18 not a bad start. Some of the later targets were not so good but I finished with a bang, a 6-5-3, a total of 14 on a 25M fourface giving me a total of 138. As it turned out a PB, a club record and a **County Record**. Andy managed a score of 288, this being his first ever field shoot was a PB and a club record Compound Unlimited. I also came away with second overall.

Not bad for the first field outing for Andy and only the second field for me this year.

A tip I did not pass on to Andy, but should have. When you have got your Field sight

marks for all your distances (recurve/compound), using the other side of your sight place a strip of tape, so you can mark your sight marks not as figures but as Metres. This makes it easier to read and less confusing. It also allows you to move all your sight marks together if you find, as Andy did, that his were slightly high. Moving them all together is very easy if the tape is on the sight and not some notes on paper.



A 50M shot, the blue peg is just out of picture at the bottom. The white peg in the distance is for juniors under 16.



A fourface shot of about 20m, blue peg for Trad, Barebow & Longbow. 30m Red peg for Compound and Recurve.

There is another Field shoot on the 7th Nov, a National Animal Round UNMARKED, no real bunnies but animal profiles. Two arrows per target at different distances I.E. what is called Walk-ups, two scoring zones 10-5. Sixteen targets shot twice from different pegs = 32, a longish day but great fun.

No Club or County longbow record for this - YET!

Mentoring

The follow up after the beginners course has been raised by some members. The coaches have suggested a mentoring/buddy system. This means one newby is hooked up with a senior archer, to help/encourage/coach them for the winter season.

So any senior archer who is available to help please let the coaches know.

Computer update.

My computer has now gone phuuut, I need **Windows XP Home Edition** to reload, can anyone help?

I am getting a new hard drive but it comes without any operating system, You can't buy XP anymore apart from the internet, which I haven't got.

Geoff B

Social Secretary

As Geoff has said our computer has been giving us serious problems for some time now and has almost given up completely. For this reason getting the Christmas Dinner menu to you has been delayed. Apologies for this. However, the meal is booked for the 3rd December at the Bull in East Farleigh. 7 for 7.30pm. I will need £5 deposit per person and your choices from the menu, which is below, by the 24th November. The full price is £19.95.

New members – if you have an email address would you please give it to Geoff Barker when

you see him on the field. Until then you will receive your Newsletter through the post. If we don't have your address we will leave your Newsletter in the shed with your name on the envelope.

Questionnaire – due to the fact that I didn't supervise Geoff, he sent out the first questionnaire which included the Christmas meal and didn't have a suggestion for a Have a Go and Barbecue. That'll teach me to leave him alone!

On the subject of the questionnaire, I have not received many responses as yet.

Now for the Christmas menu

Starters

Golden Winter Soup – a combination of leek, potato and butternut squash, served with fresh baguette.

Chicken Liver, Pork and Thyme Terrine – served with salad and fresh baguette.

Cheesy Vegetable Cakes – served with salad leaves, green chutney and fresh baguette.

Gravadlax – smoked salmon and dill, served on a bed of leaves.

Main Courses

Roast Turkey – and all the trimmings
Roast Topside of Beef - and Yorkshire pudding

Nut Roast - with cashews and cranberries

Fillet of Salmon – served with pasta and roast tomato sauce.

Desserts

Christmas Pudding – and brandy sauce

Deep Filled Apple Pie – with custard

Amaretto Torte – served with cream

Chocolate Bonanza – chocolate cake and mousse with chocolate fudge icing, served with cream.

Please get your menus and deposits to me by the 24th November at the very latest. You can phone me and give the deposits to Geoff or myself, post them or just put them in our post box.

Jean B